



CATHOLIC CEMETERIES OF LONG ISLAND

Serving the Catholic Community Across Long Island Since 1856

CEMETERY VISITORS GUIDE

Catholic Cemeteries are rooted in ancient religious traditions that display a respect for the deceased and a reverence for their physical remains. A core belief which dates back to the birth of Christianity is that there is a direct relationship between Jesus' death and resurrection and the death and resurrection of the Christian. Catholics believe in life eternal. Jesus said: "I am the resurrection and the life; whoever believes in me will never die" (Jn.11:25-26). Just as Christ rose from the dead, He will raise our mortal remains to be like His in glory.

Catholic Cemeteries are a constant reminder that death is just a part of the journey that leads to new life. Catholic Cemeteries are sacred places that strive to create a religious environment conducive of prayer, reflection and remembrance. Our cemeteries encourage prayerful visitation through the use of statuary, landscaping, architecture and Christian symbolism throughout buildings and by memorialization.

By choosing Catholic Cemeteries, one selects a final resting place that reflects the beliefs and values from life's personal journey. It is a resting place that is sacred and shared with all fellow pilgrims awaiting the resurrection of the dead and the promise of everlasting life. Families visit these sacred burial grounds for prayer and reflection. Specifically, each visitor seeks their loved one's burial place as an expression of their love and devotion.

As the cemeteries are sacred in nature, activities such as the walking of pets, jogging, bike riding, roller blading, picnicking and similar activities are not permitted on cemetery grounds. Please refer to our cemetery **Rules and Regulations** for additional details. A copy of these rules can be reviewed at the cemetery office or at www.CCLongIsland.org.

Hours of Operation

Visiting Hours

Cemetery gates are open from **8:00AM to 5:00PM** every day of the year, including holidays (weather permitting). Mausoleum Buildings are open from **8:00AM to 4:30PM** every day.

Cemetery Office Hours

Cemetery offices are generally open during the following hours, excluding holidays:

Monday to Friday: **9:00AM to 4:30PM**

Saturday: **9:00AM to Noon***

** Holy Rood office closes at **4:30PM** on Saturdays*

Cemetery offices are closed on Sundays and the major holidays throughout the year. A complete list of holiday closings is available at the cemetery office or at www.CCLongIsland.org.

Locating a Burial Space

Visitors can find the grave, crypt, or niche location of a loved one by using one of the kiosks located in or near the cemetery office. The search directory can also be accessed by visiting <http://search.cclongisland.org> on a computer or mobile device.



- Enter the last name and given (first) name of the deceased. You can also narrow down your search by selecting the cemetery or year of death from the dropdown menus. After entering all information, click the “Search” button.
- Results will display all burials that match the search criteria, including name, cemetery, burial location, date of death, and age.
- Click on the name or map icon to bring up an interactive cemetery map which will display the plot location within the cemetery and provide details on who is buried in that grave.

If you do not have access to a computer, or if you are having trouble locating a loved one, our office staff will be happy to assist you and provide you with a map to help locate the burial space.

Locations will include the following pieces of information:

Plots: Section — Range — Plot — Grave #

After arriving at the section, look on the side of a monument to find the range and plot number. This information will appear on the face of a flush marker.

Crypts/Niches: Mausoleum — Corridor — Tier — Crypt/Niche #

In the mausoleum, once you have arrived at the corridor of the location, look at the base cove for numbering and the side walls for the tier letters.



Masses & Events

In time, we come to the awareness that the cemetery is a place of comfort; we live in the hope that those we love are safe and secure in the Lord. We are also comforted in the simple act of remembering our loved ones, as the visit to the cemetery renews a bond we know can never be broken.

We invite you to join Catholic Cemeteries of Long Island for our regularly scheduled Masses and events. The following Masses and events are offered at each of our cemeteries (unless otherwise noted):

- Saturday Masses in remembrance of those buried at our cemeteries
- Special Mass celebrations on Memorial Day and All Souls Day
- Stations of the Cross during Lent (*Holy Rood only*). Virtual Stations of the Cross are available at www.CCLongIsland.org
- Sunday Vespers in November (*Holy Rood only*)
- Christmas Ornament Masses and Tree Blessings



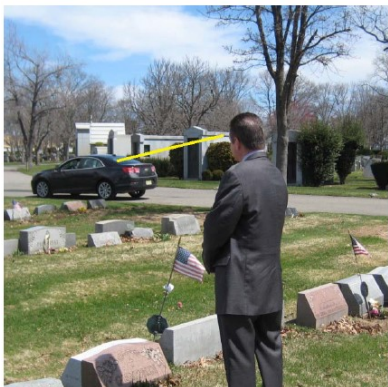
Family and friends are invited to attend these events at Catholic Cemeteries of Long Island. Please contact our cemetery office or visit www.CCLongIsland.org for event dates and times. You can also visit our Facebook page ([@CCLongIsland](https://www.facebook.com/CCLongIsland)) to view our event calendar and photo albums.

Be a Savvy Cemetery Visitor

A savvy cemetery visitor parks several rows in front of the gravesite they are going to visit. This allows the visitor a peripheral view of their vehicle with just a slight forward glance. This is especially advantageous during more prolonged visits to decorate and plant at the site.



DO



DO NOT



PLEASE KEEP CARS ENTIRELY OFF GRASS!

The lawn areas of many sections throughout the cemetery are bordered with a metal edge. This is intended to keep the lawn area intact and provide a neat edge around roadways for aesthetic appeal.

The roadways are wide enough so that vehicles can park along roadways and other vehicles have ample space to pass. Parking on the grass disrupts the growth of grass and causes unsightly tire marks. It is also not considerate to those who have purchased burial privileges along roadsides.

We have received some complaints from visitors regarding punctured tires. The metal edging is sharp and can easily damage a tire when visitors park on the grass or drive too close to the edge.

The cemetery will **not** be responsible for damage done to tires as a result of parking on the lawn area. Please do yourself and the cemetery a favor, by keeping entirely off the grass. We thank you for your understanding and cooperation.

DO



DO NOT



Important Safety Guidelines



Your safety is of the utmost importance to us. For your safety and for the safety of fellow visitors, please follow these important guidelines.



For your safety please walk on established grass only!

We are not responsible for injuries, and you assume the risk caused by a failure to comply with these regulations.



Slippery Surfaces – This cemetery contains polished granite and bronze markers that are flush with the ground. Granite and bronze surfaces are slippery when exposed to rain, frost, snow, and grass clippings.



Roadside Visitation – To avoid potential injury when ground is snow covered, visits are limited to roadside only.



Concealed Hazards – Snow or grass clippings can conceal walking hazards such as: raised markers, uneven surfaces, ground depressions, and decorations.



Exercise Caution – Uneven ground and settling soil around gravesites can create walking hazards throughout the cemetery.



Sinking Hazards – Rain can create muddy conditions around gravesites that will not support a person's weight. Avoid puddled areas or ground depressions to prevent injury from sinking.



Walk the Range or Row – Avoid walking between the headstones and markers. Walk the center of the range or row to prevent injury.

Important Safety Guidelines



All vehicles shall abide by the vehicle and traffic laws of the State of New York and of the cemetery. The speed of vehicles within cemetery roadways shall be limited to **20 MPH**.



Avoid Damages – Avoid u turns on the cemetery roadways. Cemeteries have narrow driveways unlike public streets, u turns can lead to damage to your vehicle, a tree, a sign, a trash pail, or water faucet located alongside the driveways.



Secure Vehicle and items – Cemetery grounds are open to the public each day for visitation, during moments of prayer and planting at the gravesite there's less attention to our surroundings. Even in grief, we can help prevent theft by securing our vehicle and personal belongings when out in public.



Turn off Faucets – Saving water resources is commendable. Helping to prevent WEST NILE or the ZIKA virus from breeding mosquitos is helping us all. Please assist with turning off water faucets.



Have all four tires on the pavement – Cemetery curbs and lawn surfaces can get damaged from improperly parked vehicles. Tires can be damaged as well from mounting or rubbing alongside curb surfaces. A well parked car arrives and leaves safely! Help protect the cemetery lawns and curbs from damage. Thank you.



Choose a flat bottom vase – Cone shaped vases are prohibited under the cemetery rules. When making a vase purchase always select a vase with a flat bottom. Inverted pin style vases are a puncture hazard and a dangerous condition to be avoided.



Before Planting, Before Decorating – Review the cemetery rules and regulations for planting, decorating, visiting, as well as understand the cemetery expectations - Resources are available at the office or at www.CCLongIsland.org

General Rules and Regulations



Why do our cemeteries have rules? Our goal is to:

- Foster cooperation between the cemetery and those who visit here.
- Ensure the continuation of the general plan set forth for the cemetery grounds.
- Design rules that protect visitors and workers from harm.

The cemetery’s management is committed that all our cemeteries are well maintained and image the Church’s respect for the dignity of each individual human person. *Rules and Regulations* play a most important part in the beautification and preservation of the sacred resting place of the faithful departed. They are intended not as restraining, but rather as defining an orderly plan of operation, care and permanent maintenance. ***No placed item, whether floral or otherwise, is considered permanent to the site. The cemetery makes every effort to enforce rules and regulations uniformly and with compassion.***

Planting & Decorating Regulations

All Gravesites

- In general, fresh cut flowers, regardless of the season, are always welcome. Cut flowers must be placed in the designated area in an approved container. Flowers must be removed when dead, and vases inverted when not in use.
- Artificial flowers will be permitted **only during the winter months** (November 1st until one week after Easter), with the **exception** of **Holy Sepulchre Cemetery in Coram**, where artificial flowers are acceptable year-round due to the significant deer population.
- Potted plants are permitted to be placed on graves for the Holy Days and Holidays but will be removed one week after the day of celebration, unless removed from pots and planted in the ground, where permitted.
- Christmas decorations in the form of a wreath, pillow or blanket may be placed on the gravesites. These items and all other Christmas decorations will be removed beginning January 15th.
- Flags for decoration must not exceed **12 x 16 inches**. No more than two flags are permitted on any one plot; **one must be an American flag**. Faded, soiled or torn flags will be removed at the sole discretion of the cemetery officials.
- All work performed by mechanical equipment or power tools of any kind is strictly prohibited. Hand trimming around memorials, weeding, hand trimming of permitted shrubbery at your family plot are all permitted, recommended and encouraged activities.
- No lot shall be raised above the established grade.
- No ornamental tree, bush, or large shrubbery that is part of the overall cemetery landscape may be used for any form of grave decoration at any time.
- To protect the safety of field employees and visitors, some items are **not permitted** in the planting area and may not be placed or affixed to monuments. Examples of prohibited items include, **but are not limited to**, the following:

Wooden crosses	Pin-wheels	Banners	Glass jars	Planters	Statues
Earthenware pots	Crockery	Bric-a-brac	Tin Cans	Shells	Balloons
Stones/Pebbles	Marble chips	Vigil lights	Edging	Bottles	Toys

*Because the cemetery is open to the public, with thousands of visitors each year, the cemetery cannot guarantee plants and decorations from **DAMAGE, THEFT, or DISAPPEARANCE**. The cemetery will not be responsible for plant or shrub damage caused by wildlife. **The cemetery reserves the right to remove and dispose of any decoration or planting WITHOUT NOTICE OR COMPENSATION when deemed as unsightly, out of season, or otherwise not permitted in accordance with the cemetery’s regulations.***

Planting & Decorating Regulations



Single and Double Graves

- Only annual flowers may be planted within a semi-circle of 18" in front of the monument. Plants such as geraniums, marigolds, begonias and ageratum are especially well-suited for this purpose. They require minimum care and maintain their beauty all season long.
- No shrubs or bushes, vines, perennials, climbers, hedging or growing boundaries are permitted. Any such planting will be removed.
- For flush marker graves, no permanent plantings are permitted. Fresh flowers may be placed in bouquet holders. Artificial bouquets may be used **only during the winter months** (November 1st until one week after Easter) with the **exception of Holy Sepulchre Cemetery in Coram**, where artificial flowers are acceptable year-round due to the significant deer population.

Three Grave Plots and Larger

- Shrubs and bushes are permitted to be planted on each side of the monument only on plots having three graves or more, i.e. three graves in width. To avoid constant trimming, slow-growing shrubs such as dwarf boxwood, Alberta Spruce, or Skyrocket dwarf junipers are recommended.
- Before planting any such shrubs, the cemetery office should be consulted in order to be sure that your planting will conform to the type of shrub permitted and to its maximum size.
- No shrub or bush is to exceed the following height restrictions: 3 feet for a lot that consists of three graves, 4 feet for a lot that consists of four graves, 5 feet for a lot that consists of five graves, 6 feet for a lot that consists of more than five graves. Preferably, shrubs should be kept four (4) to six (6) inches below the maximum size permitted.
- Shrubs and bushes are not to extend in front or behind the memorial in excess of 14" nor to encroach upon any other plot.
- Only annual flowers may be planted in a semi-circle of 18" in front of the monument. Perennials, vines, climbers, hedging or rose bushes are not permitted.
- For rules on planting for twelve (12) grave plots or larger, please consult the cemetery office.

Community Mausoleums & Columbariums

- Where floral tables are provided, bouquets of fresh flowers are permitted. Artificial bouquets are permitted from November 1st until one week after Easter.
- In chapels and buildings where tables are not provided, the cemetery will provide floral arrangements as decoration.
- Community mausoleums and columbarium areas require acts of sharing of common areas including the walkways, benches, and floral stands. With many people buried in close proximity, cemetery management must restrict visitors by limiting the size and the number of floral bouquets placed in these areas.
- At no time may anything be attached or added to crypt or niche covers as damage will occur. Prohibited items include but are not limited to writing/decorating with flowers, markers, stickers, cards, pictures, messages, or tape.
- Wreaths, designs, pictures and other decorative or devotional objects are not permitted in community mausoleums and columbarium areas
- Responsibility for the proper maintenance of all lawns, trees, shrubbery and ornamental plantings surrounding community mausoleum & columbarium facilities rests with cemetery management.

The full list of rules and regulations can be viewed at www.CCLongIsland.org

Seasonal Decoration Programs

Catholic Cemeteries offers a seasonal decoration program on an annual basis for **Christmas, Easter, Mother's Day, and Father's Day**. Decorations may be purchased for gravesite placement or for our chapels. Orders may be placed on our website or at one of our cemetery offices.



Gravesite Decorations

- Evergreen blanket or pillow for Christmas
- Palm Cross at Easter
- Seasonal flower planter for Mother's Day
- Seasonal flower planter for Father's Day



Chapel Memorial Decorations

- Poinsettias at Christmas
- Lilies at Easter
- Potted plants for Mother's Day
- Potted plants for Father's Day



Maintenance Requests

For your convenience, all service requests may be submitted by completing a Maintenance Request Form on our website at www.CCLongIsland.org. To access the form, go to the **Services** menu at the top of the page and click the **Maintenance Requests** option.

If you do not have computer access, you can contact the cemetery office to request service. Our Customer Service Manager will review your request and provide you with an update as soon as possible.

Need More Information?

If you have additional questions or if you need more information, email us at info@cclongisland.org or visit our website at www.CCLongIsland.org. The website is continuously updated with the latest information, including forms, pricing, regulations, and schedules of upcoming events. You can also visit our Facebook page ([@CCLongIsland](https://www.facebook.com/CCLongIsland)) for updates, photos, and event information.

CATHOLIC CEMETERIES OF LONG ISLAND

CEMETERY OF THE HOLY ROOD

111 Old Country Rd
Westbury, NY 11590
Phone: (516) 334-7990

QUEEN OF ALL SAINTS CEMETERY

115 Wheeler Rd
Central Islip, NY 11722
Phone: (631) 234-8297

QUEEN OF PEACE CEMETERY

Jericho Turnpike
Old Westbury, NY 11568
Phone: (516) 434-2439

HOLY SEPULCHRE CEMETERY

3442 Route 112
Coram, NY 11727
Phone: (631) 732-3460

